



Longitudinal Seamer

► ► *LS series*



■ LS-15 with cold wire feeder

ProArc seamers are designed for straight line welding of all weldable metals of thickness from .004-.375 inches. It provides 100% penetration, single pass weld on untacked cylinders and flat sheets without heat distortion to the material. This optimizes any process which reduces welding costs and improves the quality of the weld.

Features

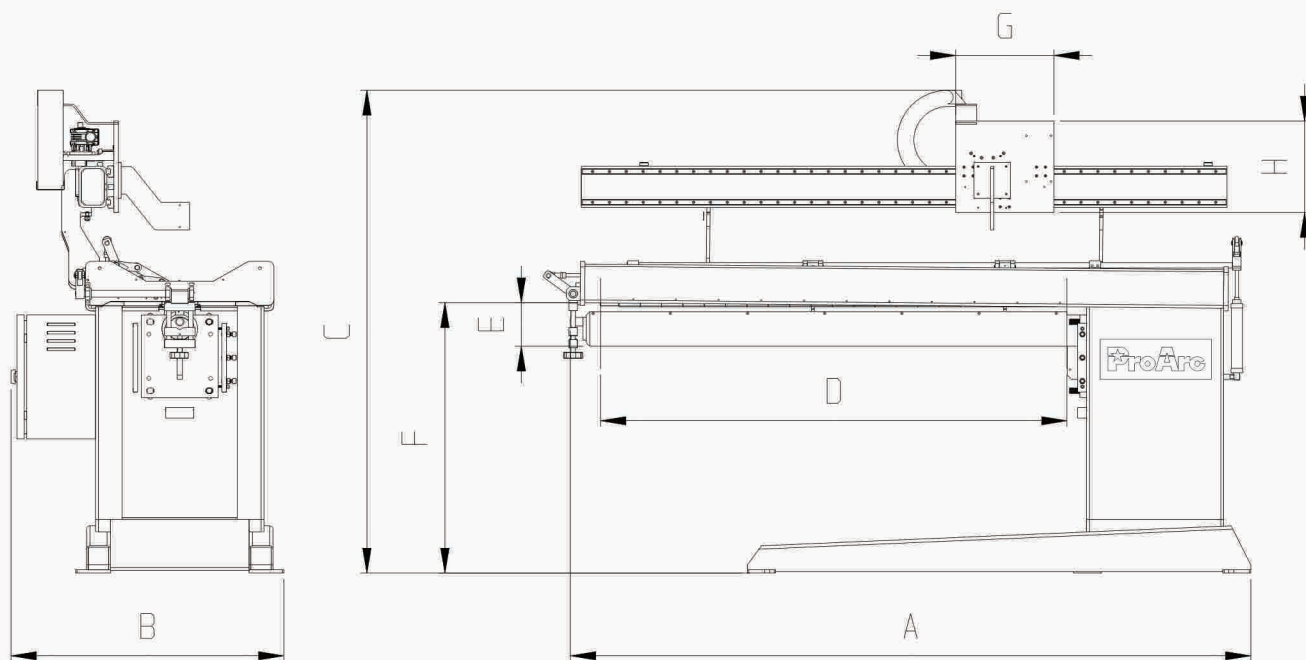
- Servo Motor drive system.
- Special clamping unit for untacked joint.
- Precision torch movement with machined beam and track providing accurate carriage travel.
- Heat sinks for maximum heat removal from the workpiece.
- Exceptional visibility around the weld head and work area.
- Copper finger clamping provide uniform heat removal and Arc-Blow is virtually eliminated.

Specifications

Specification								
Model		LS-06	LS-09	LS-12	LS-15	LS-18	LS-24	LS-30
Power input		AC 110 / 220V, 50 / 60Hz, 1 phase						
Carriage drive		Rack & Pinion						
Overall length (A)	Inch	57	69	81	93	108	129	161
Overall width (B)	Inch	35.5						
Overall height (C)	Inch	65				68		71
Welding length (D)	Inch	27	39	51	63	75	99	123
Thickness range	Inch	.004-.375						
Min. dia. Piecepart (E)	Inch	2.625	3.5	4.25	5.25	6	7.25	9.5
Max. dia. Piecepart (F)	Inch	33.5						
Carriage speed range	lpm	1-472						
Carriage width (G)	Inch	13.75						
Carriage height (H)	Inch	13						
Weight	Lbs	1213	1433	1654	1874	2315	2536	2756

*Specifications subject to change without notice

Dimensions



Options

- Thin material (under .016) continuous holding strips
- Riser block or elevating type for diameter exceeding 850mm
- Pneumatic mandrel clamping device
- Pneumatic torch lift
- Automatic gas purge system
- Air powered edge alignment device
- Auto loading travel car
- Digital cold wire feeder

